



10249

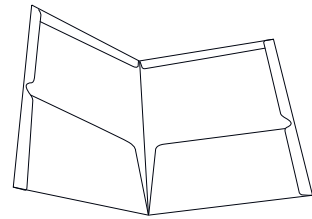


7128

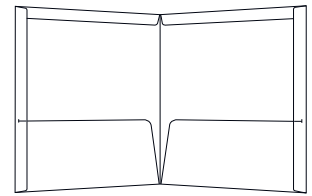
# Custom Presentation Folders



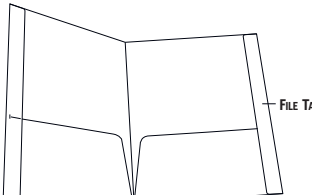
SL2385



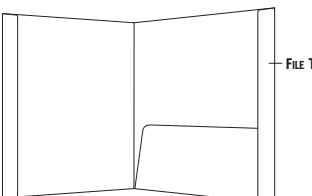
1100 9-5/8" W x 11-3/4" H  
[2] 4-1/2" H Pockets  
3/4" Side & Top Reinforcements  
Thumb Notches in Side Reinforcements



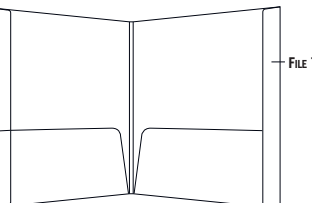
0759 9-5/8" W x 11-3/4" H  
[2] 4-1/2" H Pockets  
3/4" Side & Top Reinforcements  
T-Slits in Side Reinforcements



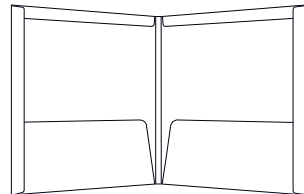
1300 9-3/4" W x 11-3/4" H  
[2] 4-1/2" H Pockets  
3/4" Side Reinforcements  
Right Reinforcements is File Tab Extension  
T-Slits in Side Reinforcements



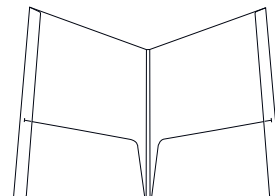
1330 9-3/4" W x 11-3/4" H  
[1] 4-1/2" H Pockets  
1" Side Reinforcements



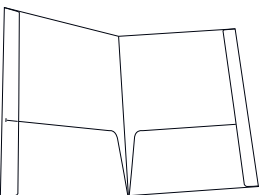
1401 9-3/4" W x 11-3/4" H  
1/4" Spine Capacity  
[2] 4-1/2" H Pockets  
1" Side Reinforcements  
Rt. Reinforcement is File Tab Extension



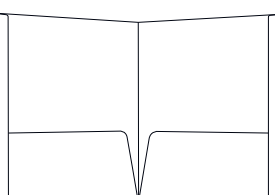
1209 9-3/4" W x 11-3/4" H  
3/8" Spine Capacity  
[2] 4-1/2" H Pockets  
3/4" Side Reinforcements



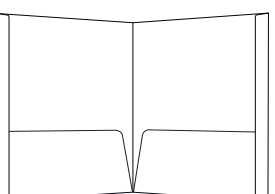
1201 9-3/4" W x 11-3/4" H  
1/4" Spine Capacity  
[2] 4-1/2" H Pockets  
3/4" Side Reinforcements



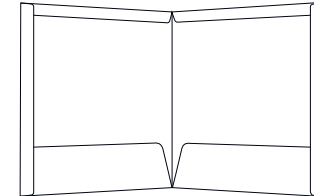
5491 9" W x 12" H  
[2] 4-1/2" H Pockets  
1" Side Reinforcements  
T-Slits in Reinforcements



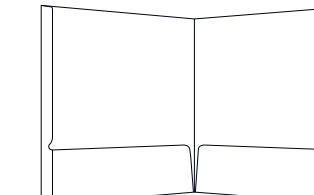
4824 9-5/8" W x 12" H  
[2] 4-1/2" H Pockets  
1" Side Reinforcements



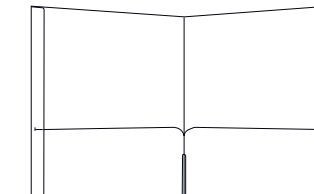
7717 8-13/16" W x 11-1/2" H  
[2] 4-1/4" H Pockets  
3/4" Side Reinforcements



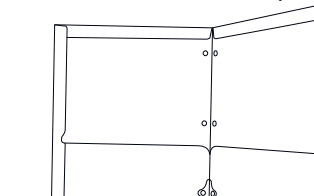
2858 9-5/8" W x 11-3/4" H  
[2] 3" H Pockets  
3/4" Side & Top Reinforcements



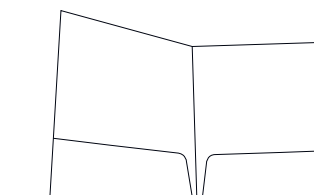
7661 11-3/4" W x 13-7/8" H  
[2] 3-13/16" H Pockets  
3/4" Side Reinforcements  
Thumb notch in Reinforcements



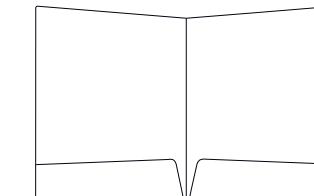
1800 9-5/8" W x 11-3/4" H  
4-1/2" H Continuous Pocket  
3/4" Side Reinforcements w. T-Slits  
Relief Cut in Pocket at Spine



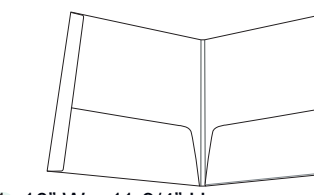
5233 9-5/8" W x 11-3/4" H  
4-1/2" H Continuous Pocket  
3/4" Side Reinforcements  
Relief Cut in Pocket at Spine  
Three Hole Drill



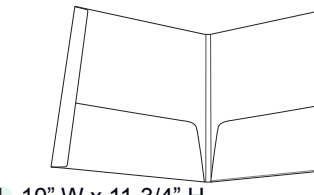
1700 9" W x 12" H  
[2] 4-1/2" H Pockets  
No Reinforcements



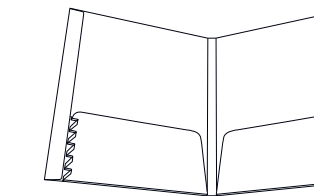
3315 8-3/4" W x 11-1/2" H  
[2] 3" H Pockets, No Reinforcements



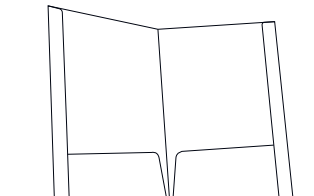
1211 10" W x 11-3/4" H  
5/16" Capacity, 1" Side Reinforcements  
[2] 4-1/2" H Pockets, 1/4" auto gusset BP  
\*Various Capacities Exist



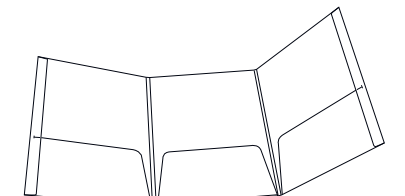
1411 10" W x 11-3/4" H  
5/16" Capacity  
[2] 4-1/2" H Pockets, 1/4" auto gusset BP  
1" Side Reinforcements, File Tab Extension  
\*Various Capacities Exist



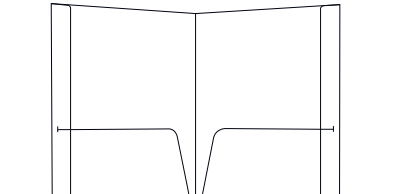
1222 10" W x 11-3/4" H  
9/16" Capacity, 1" Side Reinforcements  
[2] 4-1/2" H Pockets, 1/4" Auto Gusset BP  
\*Various Capacities Exist



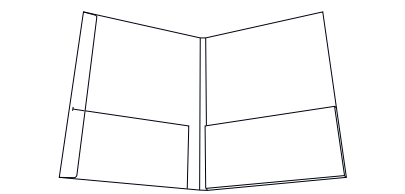
5884 10" W x 11-3/4" H  
9/16" Capacity  
[2] 4-1/2" H Pockets, 1/4" Auto Gusset BP  
1" Side Reinforcements  
File Tab Extension  
\*Various Capacities Exist



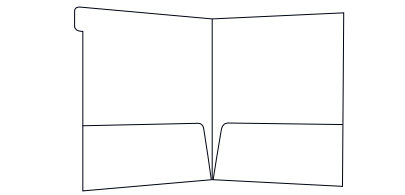
1500 9" W x 14-1/2" H  
[2] 5" H Pockets  
1" Side Reinforcements, Legal Size



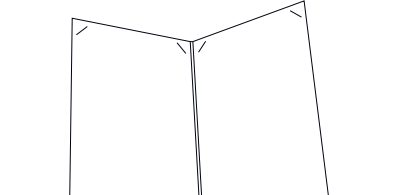
7352 6" W x 9" H  
[2] 4" H Pockets  
3/4" Side Reinforcements w. T-Slits



7259 9" W x 12" H  
7/16" Capacity  
[2] 4-1/2" H Pockets, Center Unglued  
3/8" Box Pocket on Right Inside Panel  
3/4" Left Side Reinforcement w. T-Slit



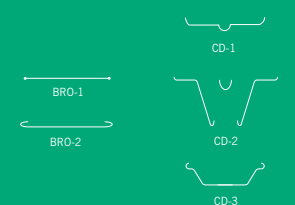
7666 8-3/4" W x 11-1/4" H  
[2] 4" H Pockets  
No Reinforcements, Tab Extension  
\*Bank of 2, 3, or 4 exist



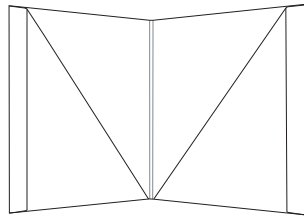
7646 9-7/16" W x 14-7/8" H  
[2] Super Constructed Panels  
Die Cut Slits to Hold Sheets of Paper  
\*IDEAL USE: Menu Covers



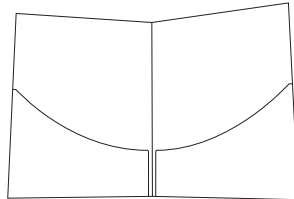
Business Card, Brochure and CD/DVD Slits



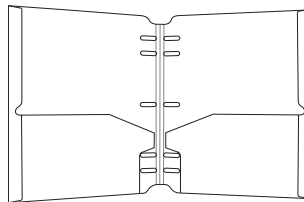
**Custom Folders**  
[Continued]



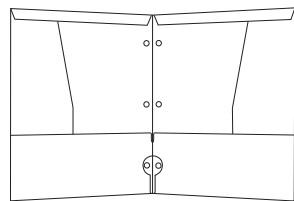
6213 9" W x 11-3/4" H  
1/4" Capacity Spine  
[2] 11-23/32" H Angled Pockets  
1" Side Reinforcements  
File Tab Extension



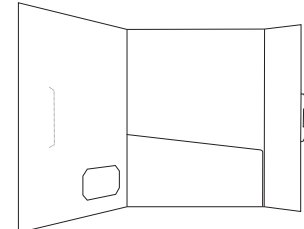
6639 9" W x 11-3/4" H  
[2] Curved Pockets, 3" H at Spine, 6" H at Side  
No Reinforcements



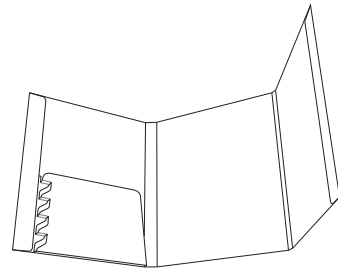
6661 9 1/4" W x 11-1/2" H  
1/2" Capacity Spine  
[2] 5-1/8" H Pockets  
3/4" Side Reinforcements, Ring Binder Holes



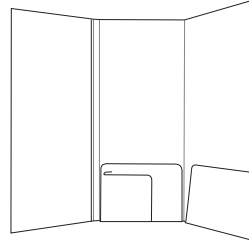
6736 9 1/2" W x 11-3/4" H  
[1] 4-1/2" H Horizontal Pocket on Left  
[1] 5" W Vertical Pocket on Right  
3/4" Side & Top Reinforcements  
Binder Holes, Diskette Slot w. Window



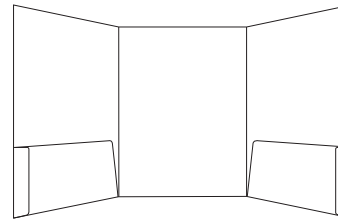
6856 11-3/4" W x 9-1/16" H  
[1] 4-3/4" H Pockets  
2-5/8" Wrap Round Flap w. Tuck Tab  
1-7/8" x 3-3/8" Window



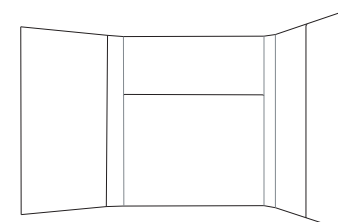
6164 7-3/4" W x 9-1/2" H, 3/4" Capacity  
[2] Full Panel Pockets  
[1] Auto Gusset Pocket  
1" Side Reinforcements



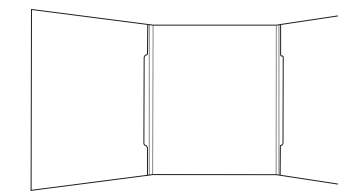
6871 4" W x 12" H  
1/4" Capacity Spine  
[2] 2-3/4" H Horizontal Pockets  
[1] 3-7/8" w. Vertical Pocket



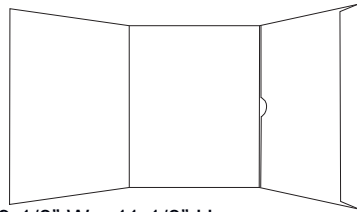
7581 9" W x 12" H  
[2] 4" H Pockets, No Center Panel Pocket  
No Reinforcements  
Glue-Over Flap on Outside Edge of Pockets



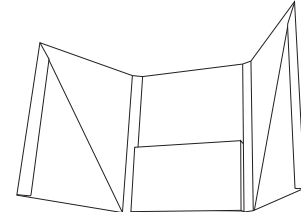
7535 9-1/2" W x 11-1/2" H  
1-1/8" Capacity Spine  
[1] 5-15/16" W Pocket  
[1] 7-1/2" H, 1/4" Capacity Box Pocket  
[1] 5" W Pocket



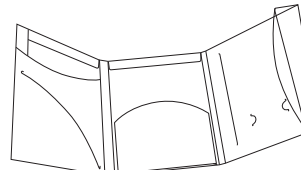
7511 9-1/8" W x 11-1/8" H  
1/4" Capacity Spine  
[2] Full Panel Pockets  
Super Constructed Middle Panel



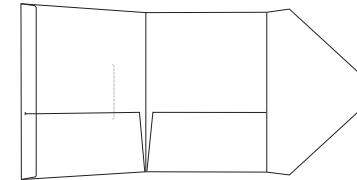
7193 9-1/8" W x 11-1/8" H  
1/4" Capacity Spine, [2] Full Panel Pockets  
Middle Panel is Super Constructed



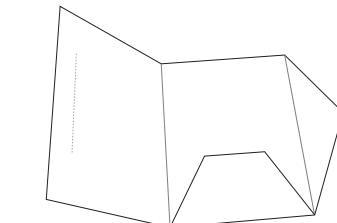
6478 9-1/4" W x 12-1/2" H  
15/16" Capacity Spine  
[2] Full Angled Pockets  
[1] 5-1/2" H, 13/16" Capacity Box Pocket  
1" Side Reinforcements



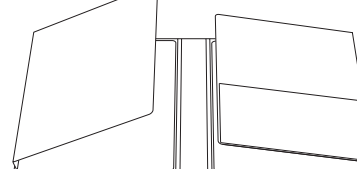
7514 9-1/4" W x 11-1/2" H  
7/8" Capacity Spine  
[1] 3/4" Full; [1] 6-14" Box Pocket  
[1] Full Panel Pocket, 1" Side Reinforcement



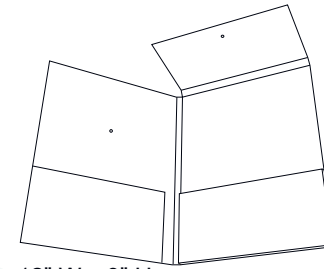
6805 12" W x 9" H  
[2] 4-1/2" H Pockets  
3/4" Side Reinforcements  
7-9/16" W Wrap Around Tuck Flap



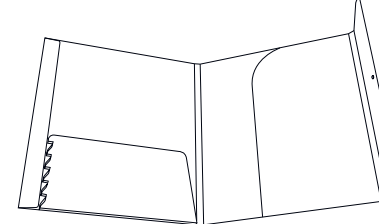
7367 12" W x 9" H  
[1] 4-1/2" H, Unglued Pocket Flap  
Tuck Flap Closure



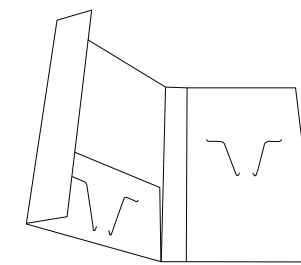
SL2385 9-1/2" W x 12" H, 2" Spine  
Turned Edge Folder  
[2] 9-1/2" x 11" Rigid Display Pages



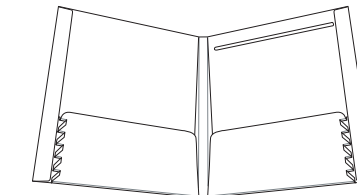
7033 12" W x 9" H  
3/8" Capacity Spine  
[2] 4-1/2" H Pockets, Box Pocket on Right  
4-1/2" Fold Down FLap w. Velcro Closure



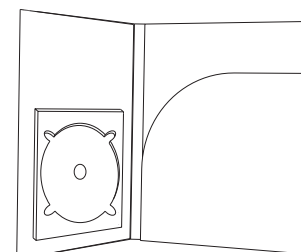
6562 10-1/8" W x 11-1/2" H 3/8" Capacity Spine  
[1] 4-1/2" H, 1/4" Auto Gusset Pocket  
[1] Vertical Pocket  
4" W Flap w. Velcro Closure



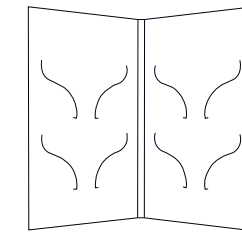
7422 9" W x 12" H  
[1] 7-1/2" W Vertical Pocket &  
[1] 4-1/2" H Horizontal Pocket  
w. Optional Disk Slits  
Wrap Around Flap w. Velcro Closure



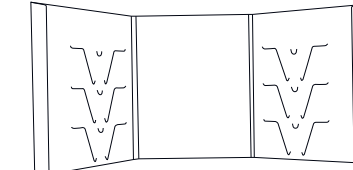
6828 101-6" W x 12" H  
5/8" Capacity Spine, 1" Side Reinforcement  
[2] 4-1/2" H, 1/4" Capacity Gusset Pockets  
[2] Super Constructed Panels  
[1] Notepad Slot



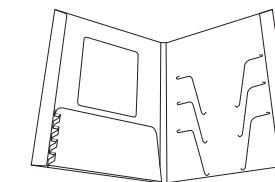
8399BF 7" W x 9" H, 1/4" Capacity  
7" W x 7" H Pocket  
Super Constructed Left Pocket  
with DVD/DVD Jewel Case



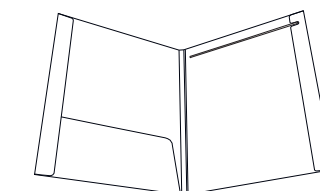
7472 6" W x 11" H, 5/16" Capacity Spine  
[2] Super Constructed Panels w. Disk Slits



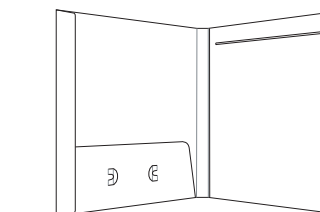
7029 8-1/2" W x 11" H  
3/8" Capacity Spine  
1" Side Reinforcements  
[2] Super Constructed Panels w. Disk Slits  
[1] Super Constructed Middle Panel



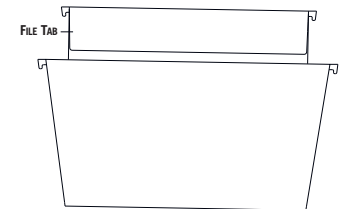
7412 7" W x 9" H  
3/8" Capacity Spine  
3/4" Side Reinforcements  
[1] 3" H Auto Gusset Pocket w. Window Above  
[1] Super Constructed Panel with Disk Slits



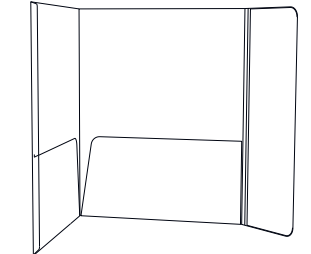
1600 9-7/8" W x 12" H  
1/4" Capacity, [1] 4" H Pocket  
Super Constructed Panel w. Notepad Slot  
1" Side Reinforcement



7688 10" W x 12" H 27/32" Capacity Spine  
[1] 4" H Pocket w. Pen Loop Die Cuts  
Super Constructed Panel  
w. Notepad Slot  
1-1/8" Side Reinforcement



9268 11-3/4" W x 9-1/4" H, 1/4" Tab Extension  
[2] Poly Hanging Rods to Hang  
in Desk Drawer



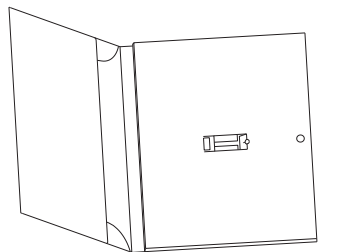
8963BF 9-1/8" W x 11-1/2" H, 4-1/2" H Pockets  
Super Constructed Third Panel w.  
Hidden Magnet Closure



1100B 9-1/2" W x 11-3/4" H, 1/2" Capacity  
1" x 3" x 1/2" USB Hub Attached  
to Reinforced Edge  
Business Card Slit on Right Pocket



9325BF 6-3/4" W x 9" H, 1/2" Capacity  
1" x 3" x 1/2" USB Hub Attached  
to Reinforced Edge  
Business Card Slit on Right Pocket



10249 9-1/4" x 11-3/4"  
3/4" Capacity Right Pocket with  
EPS Foam to Hold USB Drive  
Magnet Closure